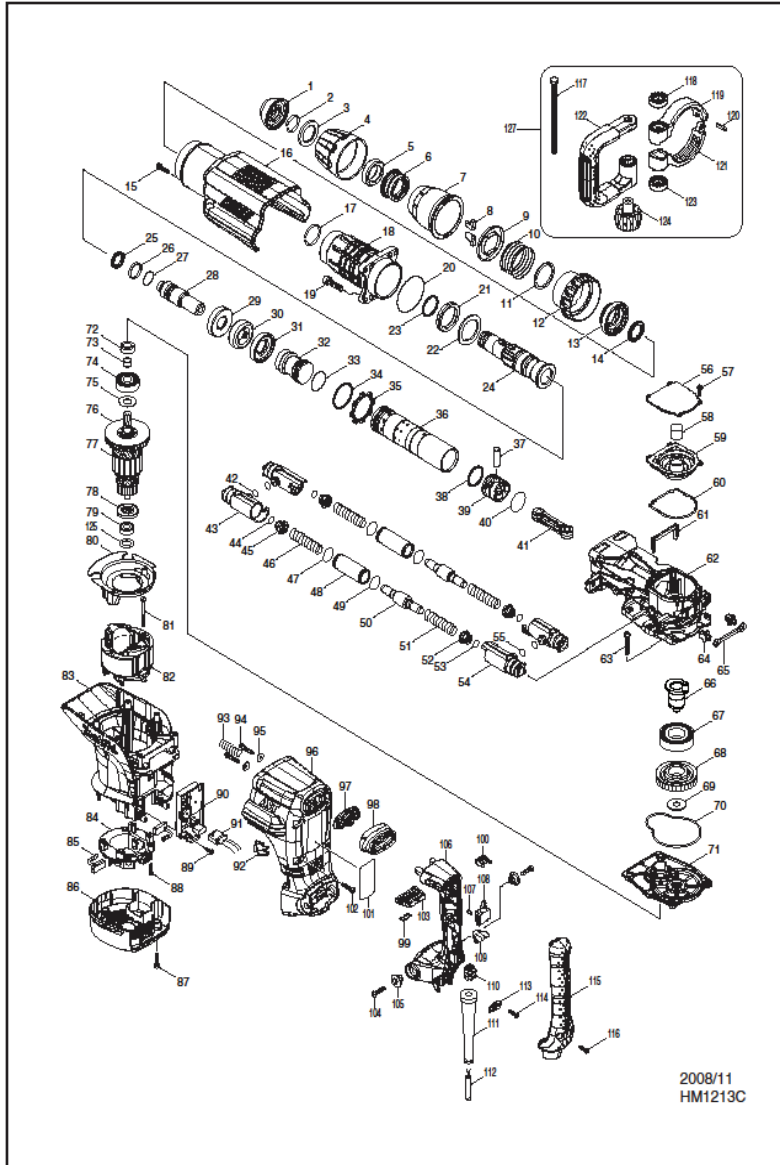


HM1213C



2008/11
HM1213C

REF. CODE	DESCRIPTION	UNIT	LIST	REF. CODE	DESCRIPTION	UNIT	
001	424165-8	TOOL HOLDER CAP	PC	066	324994-8	CRANK SHAFT	PC
002	233973-4	RING SPRING 26	PC	067	211424-7	BALL BEARING 6206LLU	PC
003	267386-7	FLAT WASHER 30	PC	068	226691-1	HELICAL GEAR 57	PC
004	450894-7	CHUCK COVER	PC	069	267398-0	FLAT WASHER 12	PC
005	262147-0	RUBBER RING	PC	070	424167-4	SEAL RING	PC
006	324987-5	CHUCK RING	PC	071	158859-0	GEAR HOUSING COMP	PC
007	450895-5	RELEASE COVER	PC	072	213231-4	OIL SEAL 15	PC
008	310279-8	TOOL RETAINER	PC	073	331596-3	SLEEVE 12	PC
009	346015-6	SPRING GUIDE	PC	074	211249-9	BALL BEARING6302LLU	PC
010	234086-4	COMPRESSION SPRING 56	PC	075	267397-2	FLAT WASHER 15	PC
011	961232-3	RETAINING RING WR-45	PC	076	240003-4	FAN 80	PC
012	450893-9	CHANGE RING COVER	PC	077	517815-3	ARMATURE ASSY 110-115V	PC
013	324969-7	CHANGE RING	PC	077	517818-7	ARMATURE ASSY 220-240V	PC
014	324988-3	LOCK RING	PC	D10	INC. 73-767879		
015	922243-3	HEX SOCKET HEAD BOLT M5X25	PC	078	681642-5	INSULATION WASHER	PC
016	450902-4	HOUSING COVER	PC	079	210059-1	BALL BEARING 6000DDW	PC
017	233970-0	RING SPRING 35	PC	080	450900-8	BAFFLE PLATE	PC
018	158858-2	BARREL COMPLETE	PC	081	266095-5	TAPPING SCREW 5X55	PC
019	922456-6	HEX SOCKET HEAD BOLT M8X35	PC	082	636301-6	FIELD 115V	PC
020	213720-9	O RING 67	PC	083	636303-2	FIELD 220-240V	PC
021	262148-8	RUBBER RING 39	PC	084	638447-4	BRUSH HOLDER UNIT	PC
022	267387-5	FLAT WASHER 39	PC	085	194412-8	CARBON BRUSH CB-171	SET
023	213079-4	O RING 35.5	PC	086	450901-6	REAR COVER	PC
024	324985-9	TOOL HOLDER	PC	087	266041-8	TAPPING SCREW 5X25	PC
025	213980-3	X RING 21	PC	088	265995-6	TAPPING SCREW 4X18	PC
026	213431-6	FLUORIDE RING 28	PC	089	266192-7	TAPPING SCREW 4X14	PC
027	213394-6	O RING 23	PC	090	631871-0	CONTROLLER	PC
028	324990-6	IMPACT BOLT	PC	090	638650-7	CONTROLLER	PC
029	324993-0	SHOULDER SLEEVE	PC	091	638650-7	LEAD UNIT	PC
030	262149-6	RUBBER RING 24	PC	092	419010-0	LENS	PC
031	324993-0	SHOULDER SLEEVE	PC	093	233434-4	COMPRESSION SPRING 11	PC
032	324991-4	STRIKER	PC	094	266173-1	TAPPING SCREW 5X30	PC
033	213499-2	O RING 31.5	PC	095	253807-5	FLAT WASHER 5	PC
034	213581-7	O RING 44	PC	096	450905-8	HANDLE BASE	PC
035	450889-0	ONE WAY VALVE GUIDE	PC	097	419783-5	DUST COVER SUPPORT	PC
036	331848-2	CYLINDER 40	PC	098	424001-8	DUST COVER	PC
037	268121-6	PIN 12	PC	099	232209-8	LEAF SPRING	PC
038	213499-2	O RING 31.5	PC	100	450891-3	LEVER STOPPER	PC
039	450961-8	PISTON	PC	101	866631-3	NAME PLATE	PC
040	213149-9	O RING 35	PC	102	266041-8	TAPPING SCREW 5X25	PC
041	450890-5	CONNECTING ROD	PC	103	450896-3	SLIDE LEVER	PC
042	213118-0	O RING 12	PC	104	266041-8	TAPPING SCREW 5X25	PC
043	318361-7	PIPE HOLDER	PC	105	313124-6	SHOULDER SLEEVE 6	PC
044	213118-0	O RING 12	PC	106	450906-6	HANDLE	PC
045	419773-8	SPRING GUIDE	PC	107	263027-3	RUBBER PIN 4	PC
046	234085-6	COMPRESSION SPRING 15	PC	108	651423-1	SWITCH	PC
047	213953-6	O RING 24	PC	109	423379-6	SPONGE SHEET	PC
048	331745-2	PIPE 22	PC	110	654531-7	TERMINAL BLOCK 2P	PC
049	213953-6	O RING 24	PC	111	682560-0	CORD GUARD 10	PC
050	324992-2	COUNTER WEIGHT	PC	112	692623-4	POWER SUPPLY CORD 1.5-4-4.0	PC
051	234085-6	COMPRESSION SPRING 15	PC	112	695228-9	POWR SUPPLY CORD 1.5-2-4.0	PC
052	419773-8	SPRING GUIDE	PC	113	687169-3	STRAIN RELIEF	PC
053	213118-0	O RING 12	PC	114	265995-6	TAPPING SCREW 4X18	PC
054	318361-7	PIPE HOLDER	PC	115	450908-2	HANDLE COVER	PC
055	213118-0	O RING 12	PC	116	265995-6	TAPPING SCREW 4X18	PC
056	450899-7	CRANK CAP COVER	PC	117	265439-6	HEX BOLT M8X150	PC
057	911133-5	PAN HEAD SCREW M4X18	PC	118	417002-3	SIDE HANDLE CAM	PC
058	443127-7	FILTER	PC	119	318505-9	SIDE HANDLE BASE 82A	PC
059	450898-9	CRANK CAP	PC	120	951166-8	SPRING PIN 5-24	PC
060	424166-6	SEAL RING	PC	121	318506-7	SIDE HANDLE BASE 82B	PC
061	450892-1	AIR PIPE	PC	122	417003-1	SIDE HANDLE	PC
062	318363-3	CRANK HOUSING	PC	123	417002-3	SIDE HANDLE CAM	PC
063	266482-8	HS BUTTON HEAD SCREW M6X40	PC	124	252640-2	WING NUT M8	PC
064	419008-7	FIX GUIDE	PC	125	267164-5	FLAT WASHER 15	PC
065	423366-5	CUSHION PLATE	PC	127	135269-8	SIDE HANDLE 82 ASSY	PC